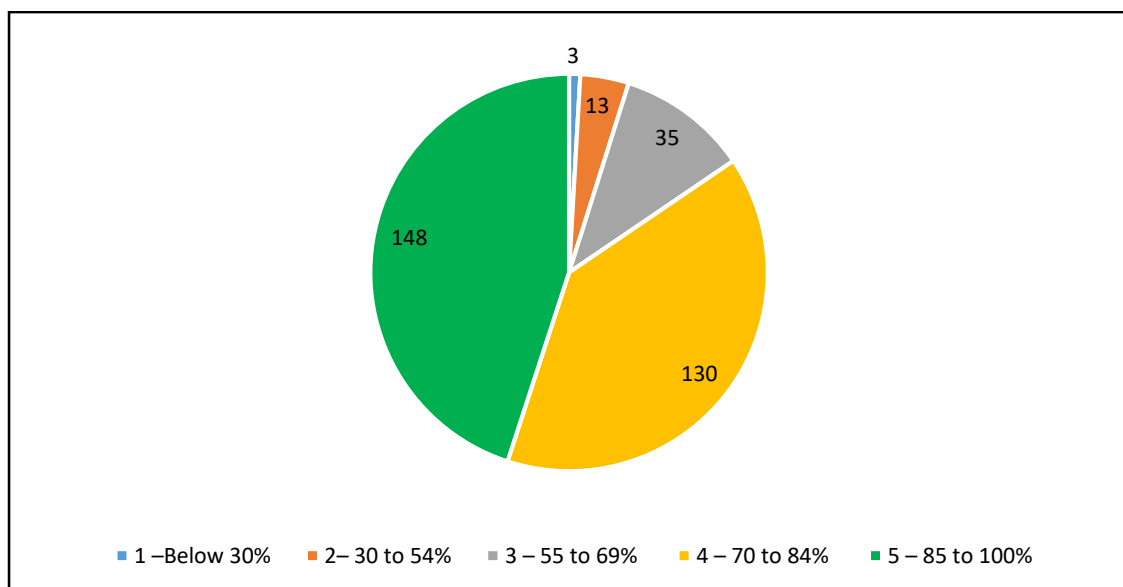


Internal Quality Assurance Cell (IQAC)

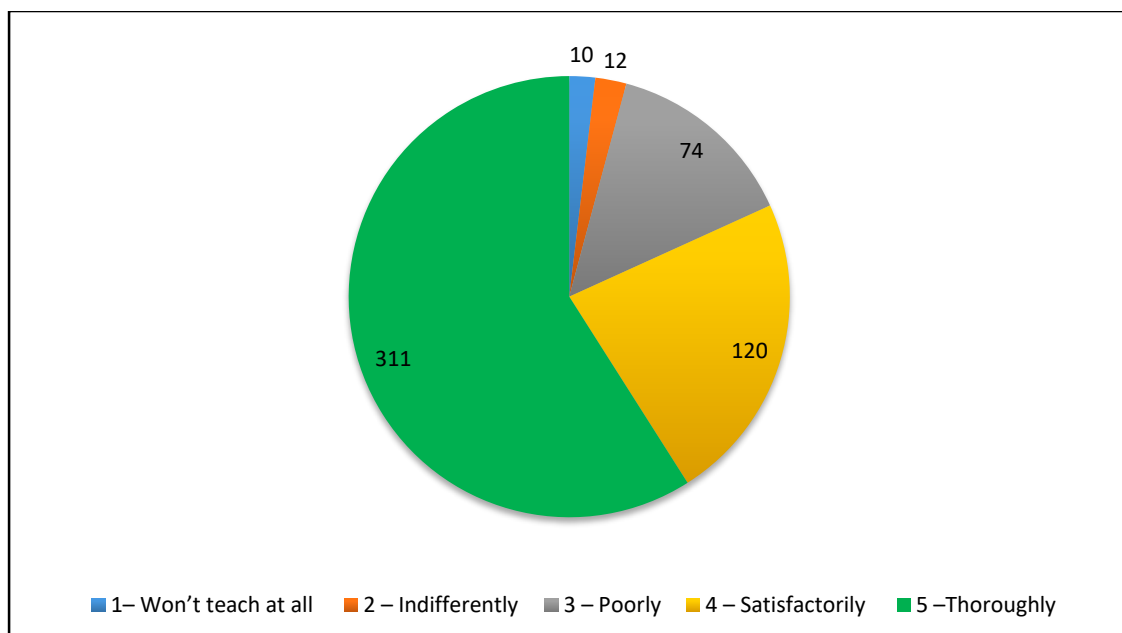
Student Satisfaction Survey for A.Y. 2019-20

The Student Satisfaction Survey was taken as per the guidelines given by NAAC. Following are the statistics of the survey.

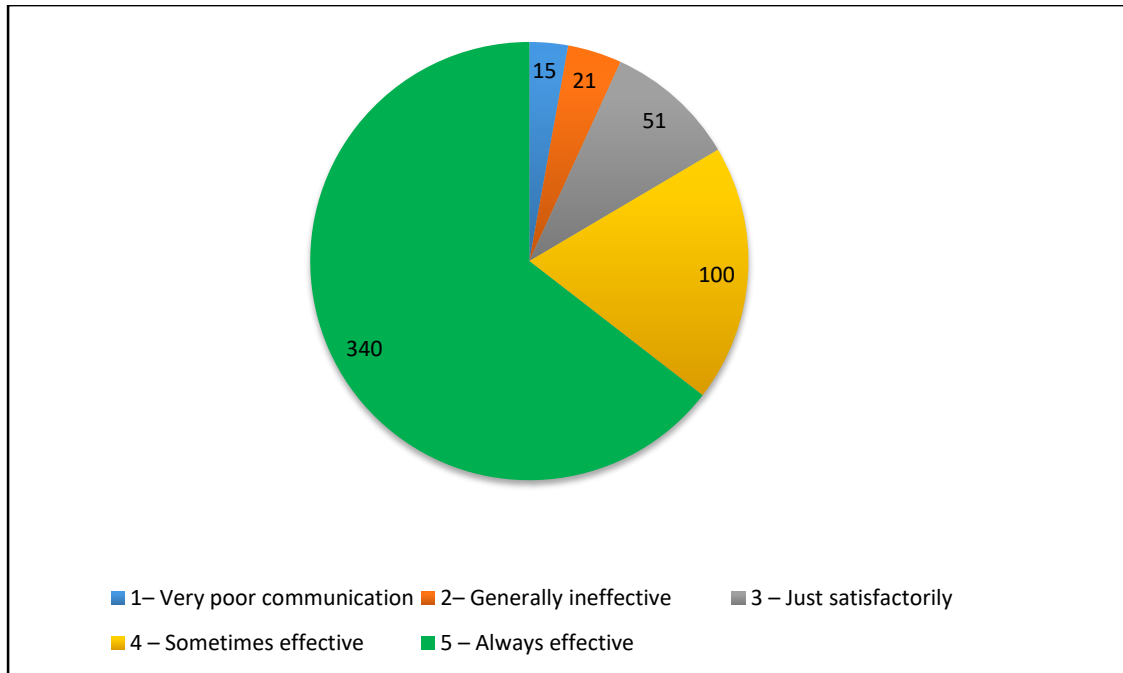
1) How much of the syllabus was covered in the class? (527 Responses)



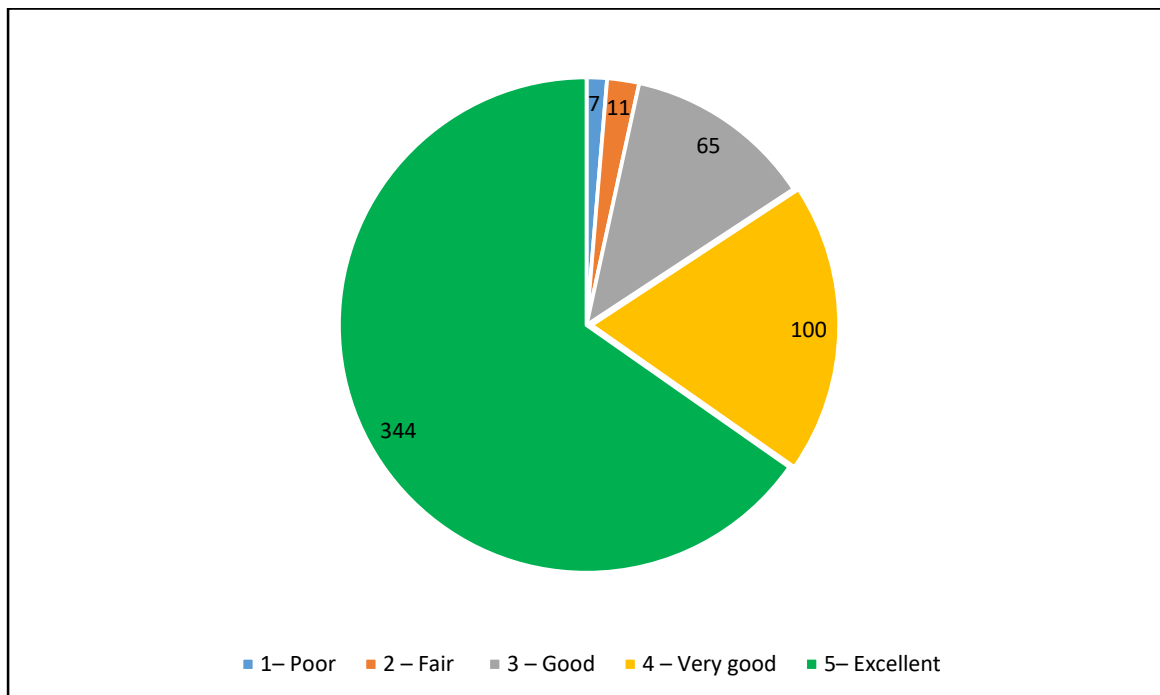
2) How well did the teachers prepare for the classes? (527 Responses)



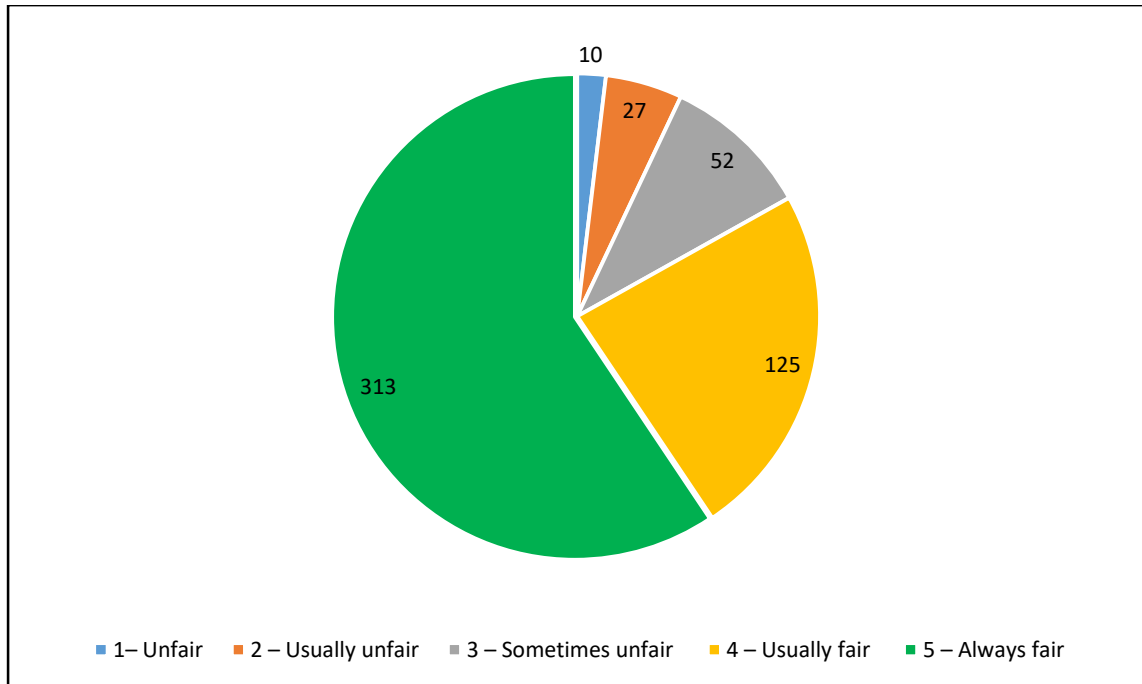
3) How well were the teachers able to communicate? (527 Responses)



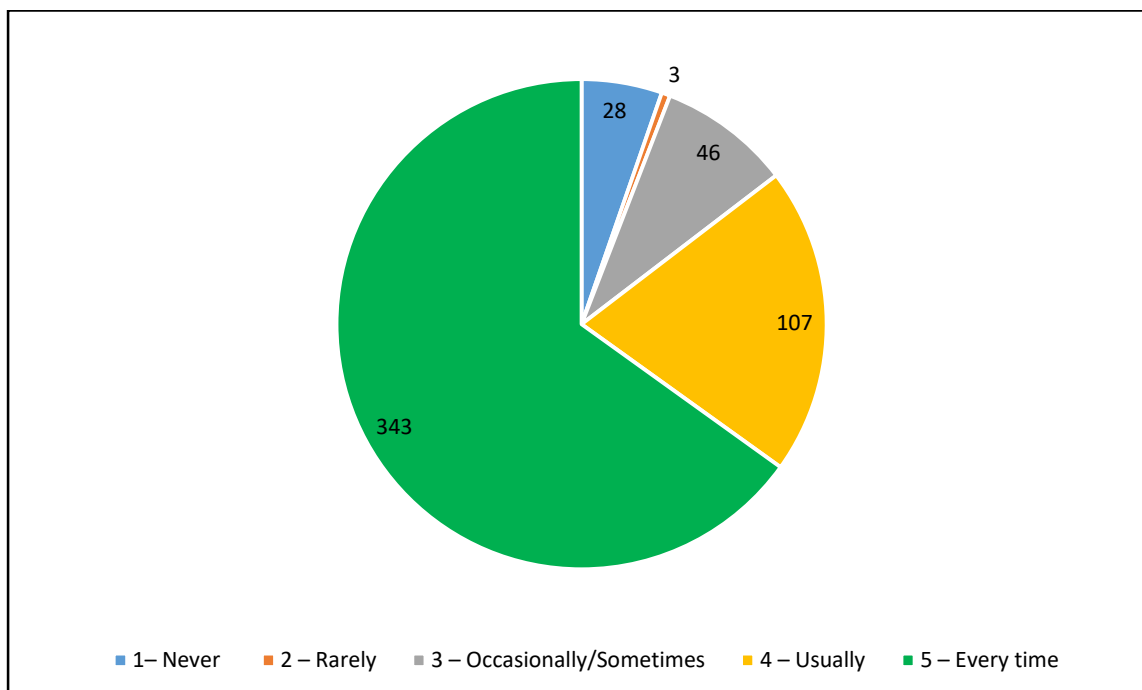
4) The teacher's approach to teaching can best be described as? (527 Responses)



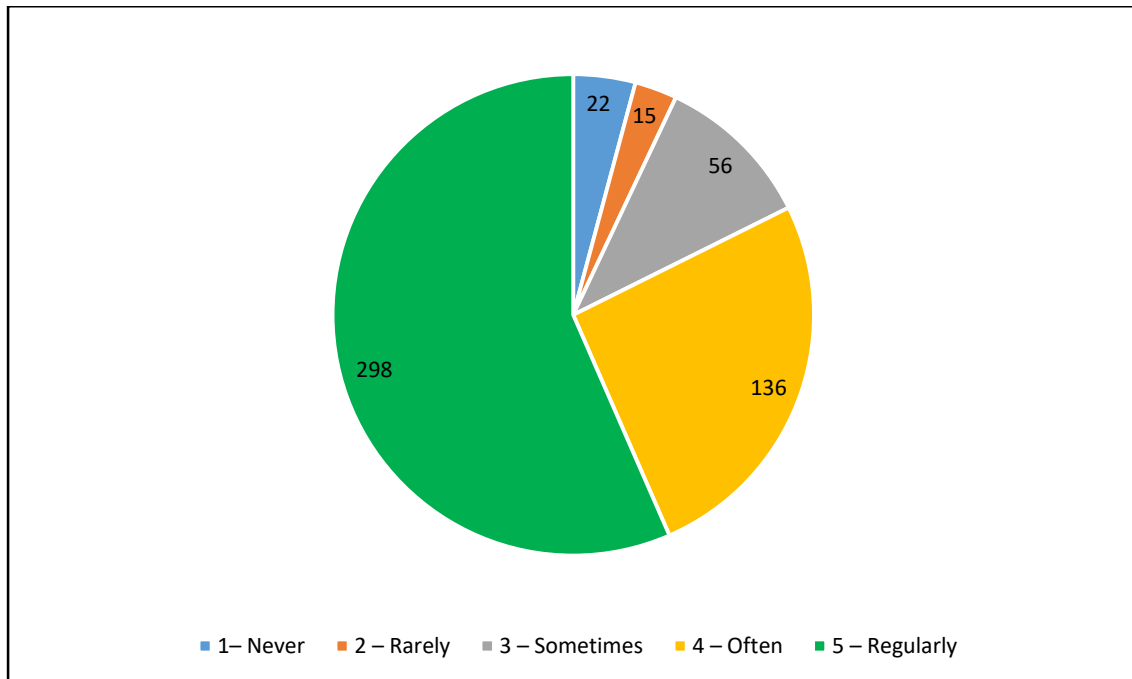
5) Fairness of the internal evaluation process by the teachers. (527 Responses)



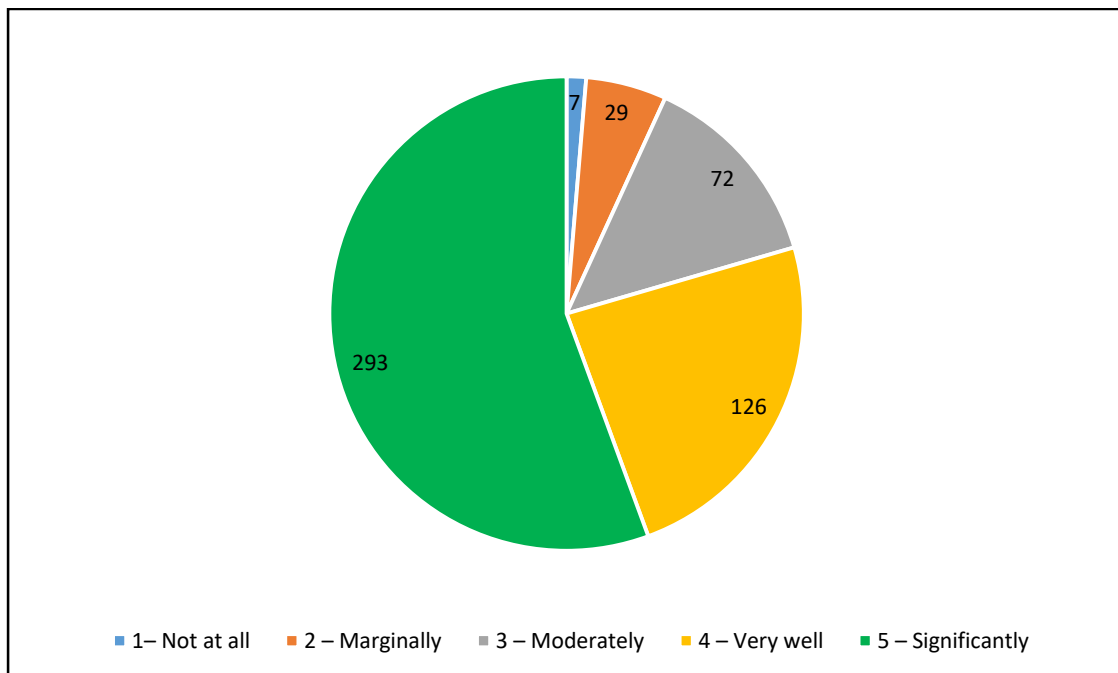
6) As your performance in assignments discussed with you? (527 Responses)



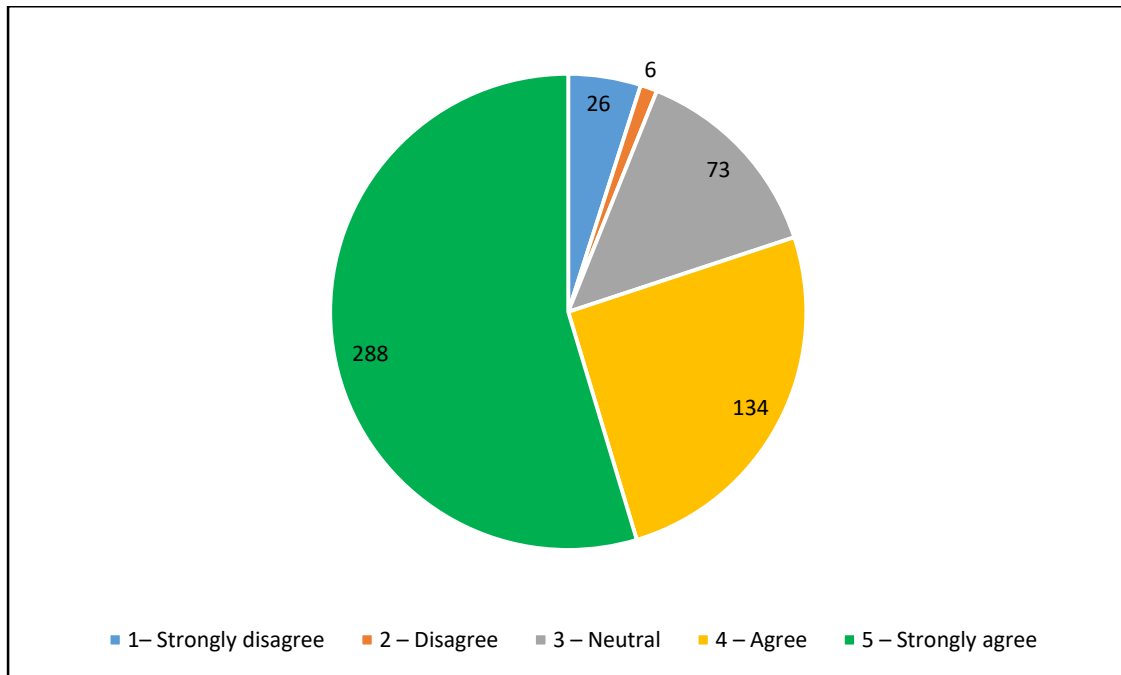
7) The institute takes active interest in promoting internship, student exchange, and field visit opportunities for students. (527 Responses)



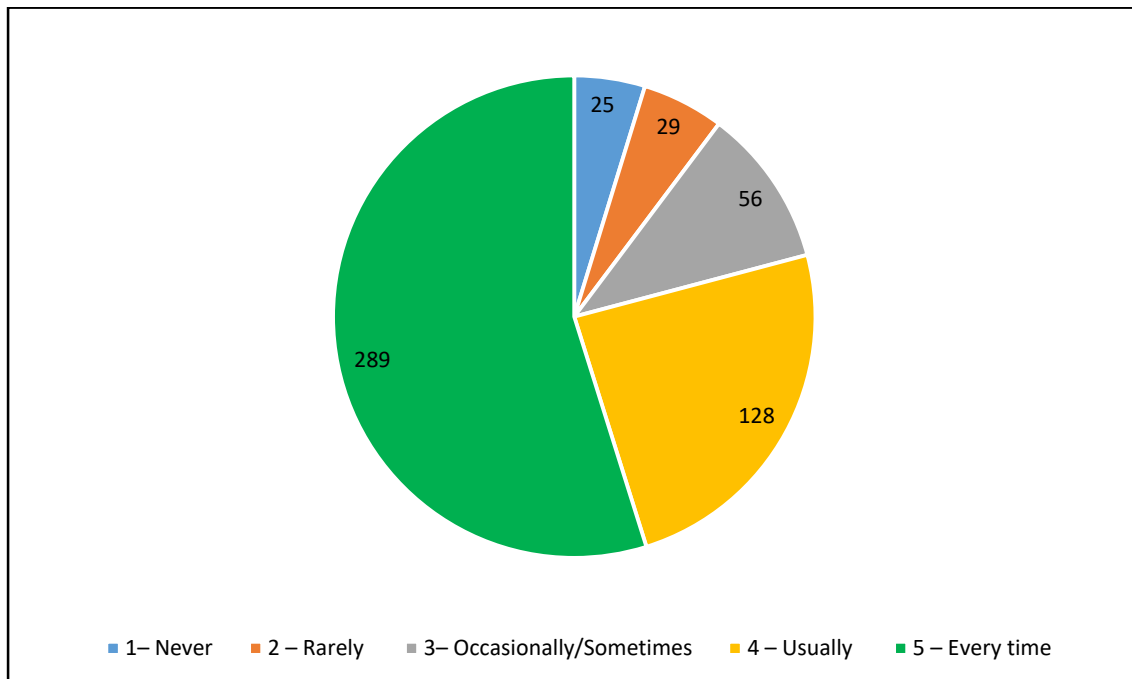
8) The teaching and mentoring process in your institution facilitates you in cognitive, social and emotional growth. (527 Responses)



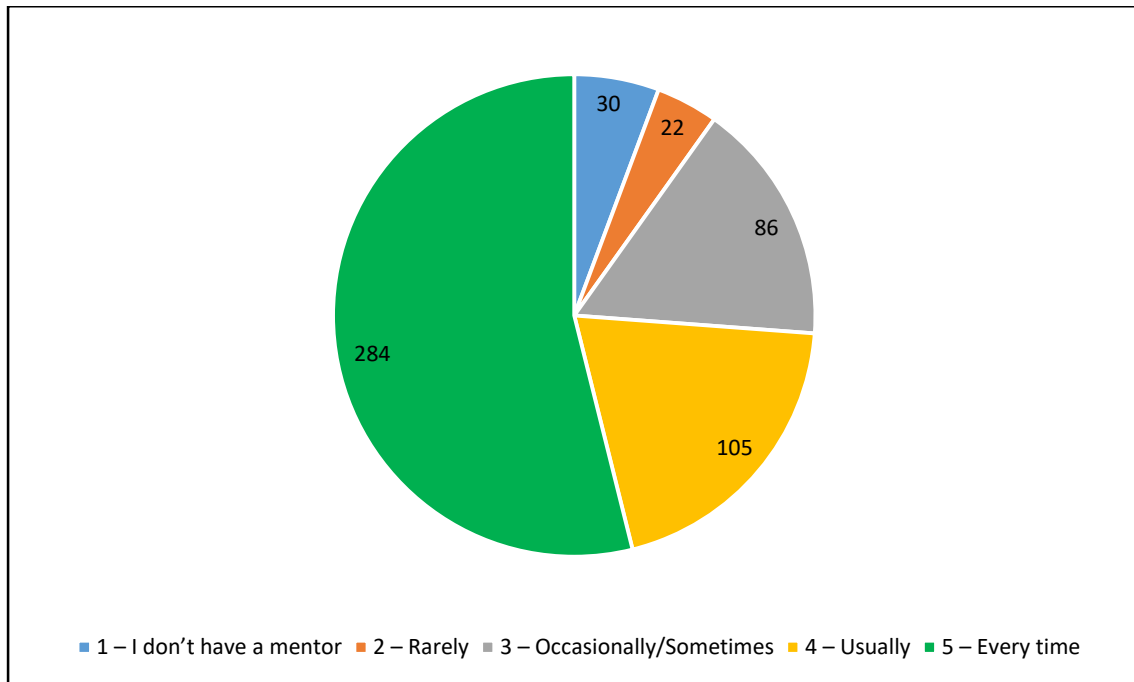
9) The institution provides multiple opportunities to learn and grow. (527 Responses)



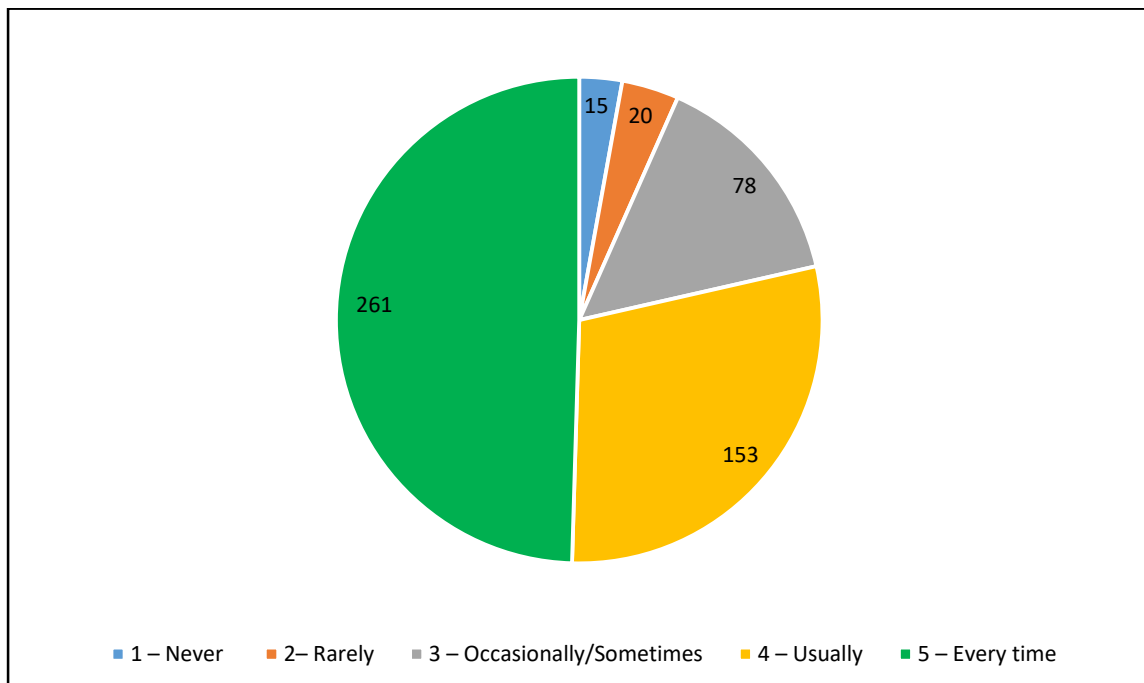
10) Teachers inform you about your expected competencies, course outcomes and programme outcomes. (527 Responses)



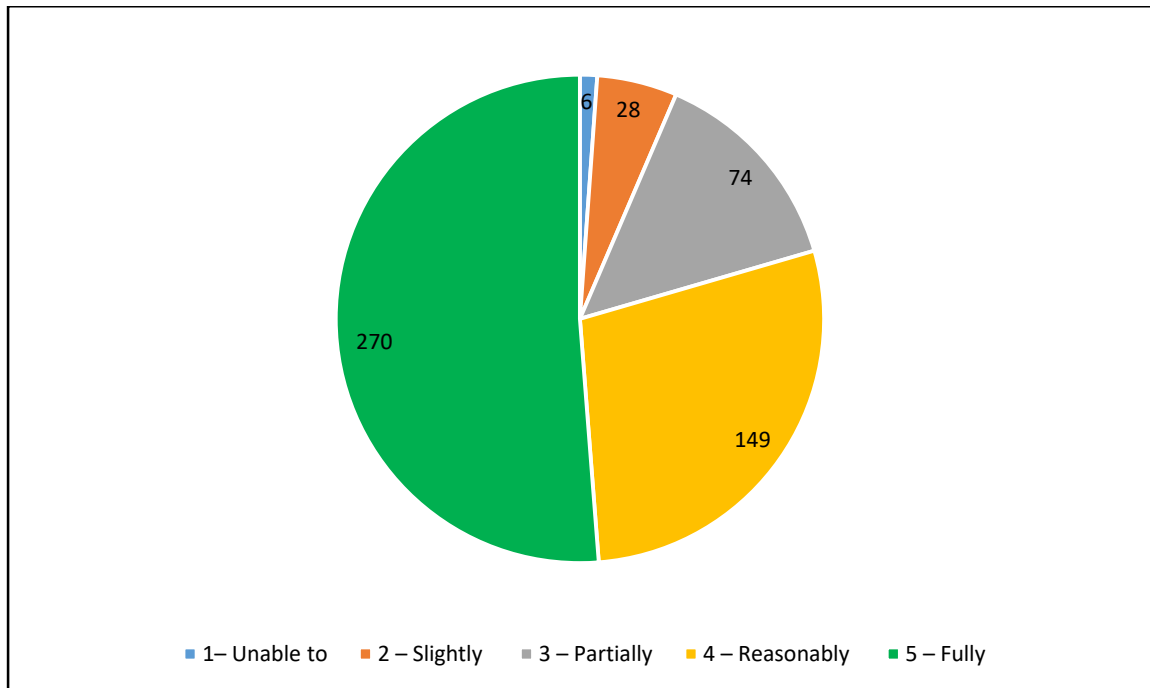
11) Your mentor does a necessary follow-up with an assigned task to you. (527 Responses)



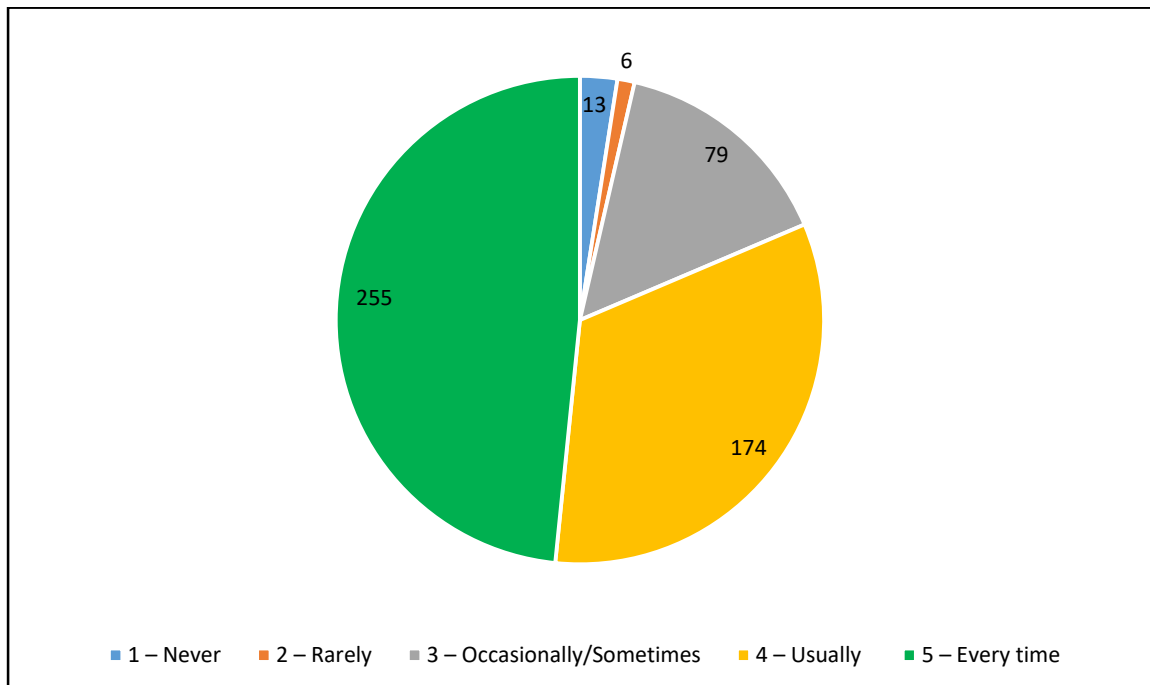
12) The teachers illustrate the concepts through examples and applications. (527 Responses)



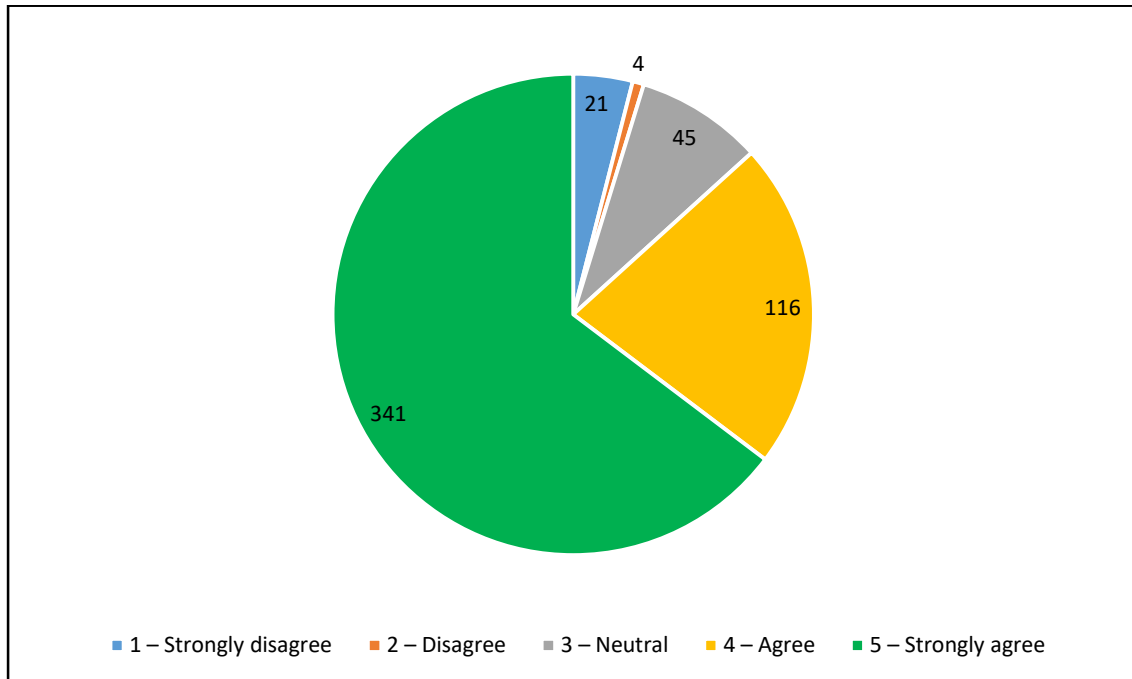
13) The teachers identify your strengths and encourage you with providing right level of challenges. (527 Responses)



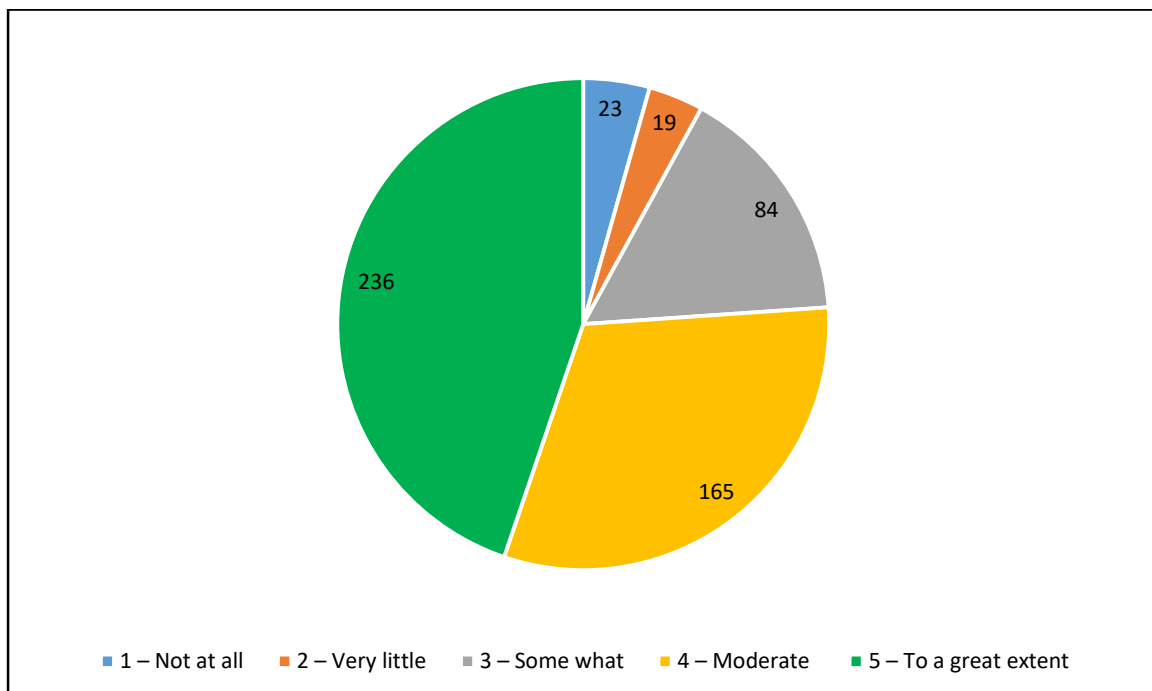
14) Teachers are able to identify your weaknesses and help you to overcome them. (527 Responses)



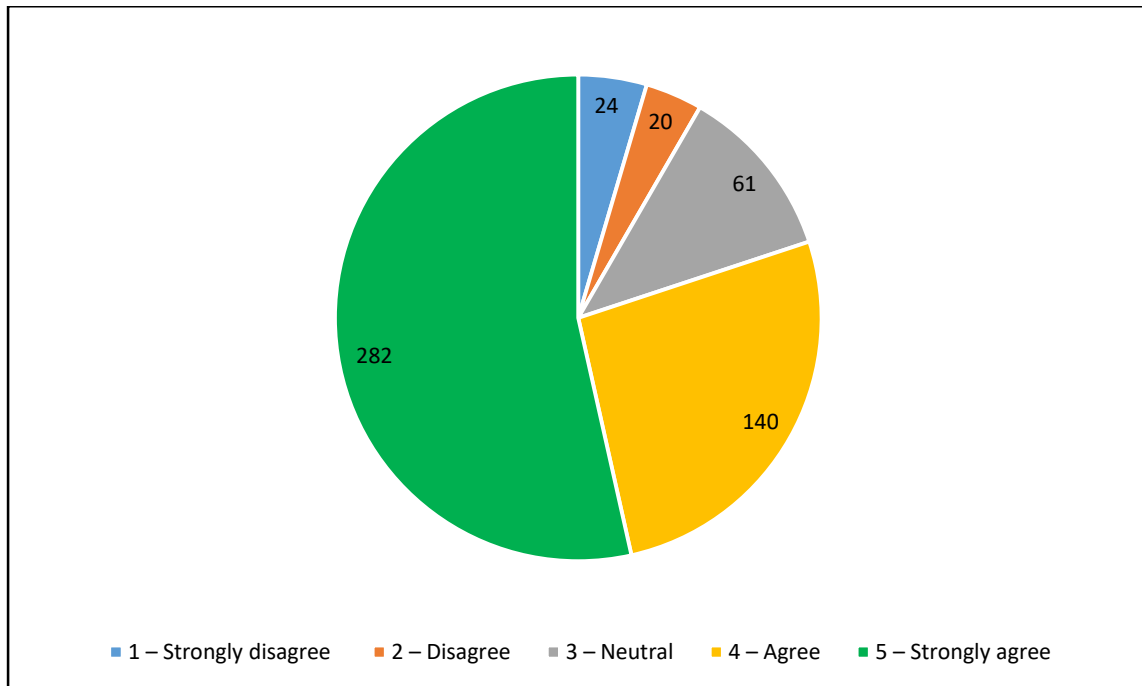
15) The institution makes effort to engage students in the monitoring, review and continuous quality improvement of the teaching learning process. (527 Responses)



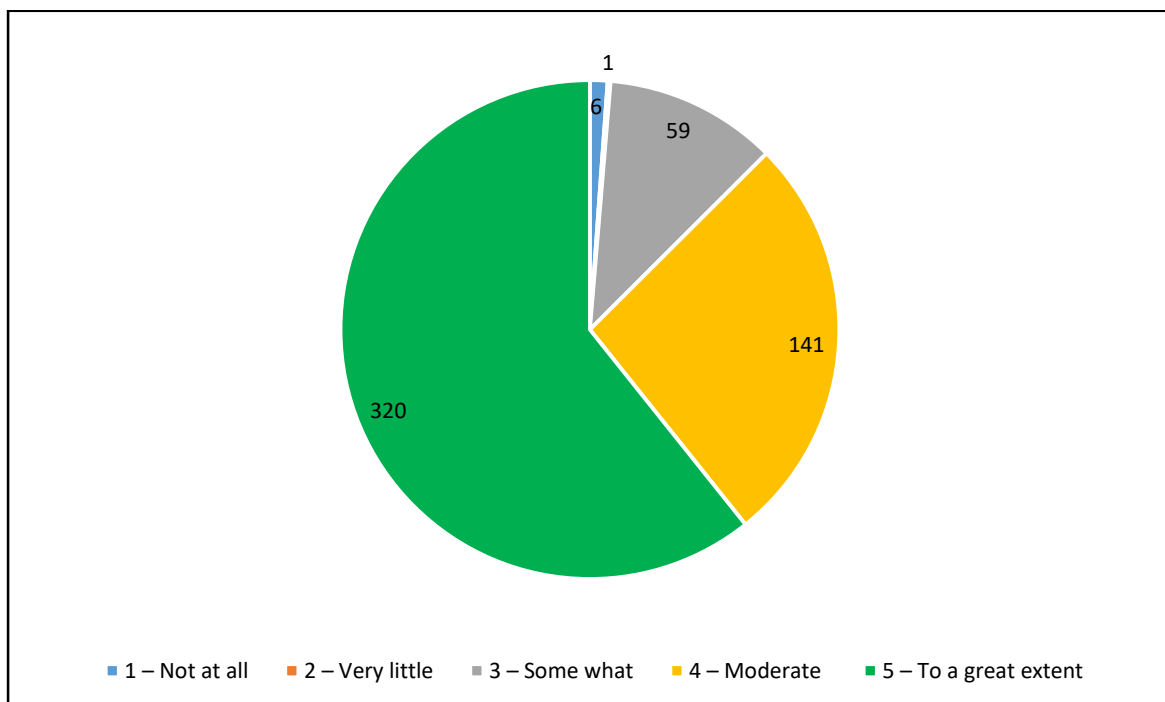
16) The institute/teachers use student centric methods, such as experiential learning, participative learning and problem solving methodologies for enhancing learning experiences. (527 Responses)



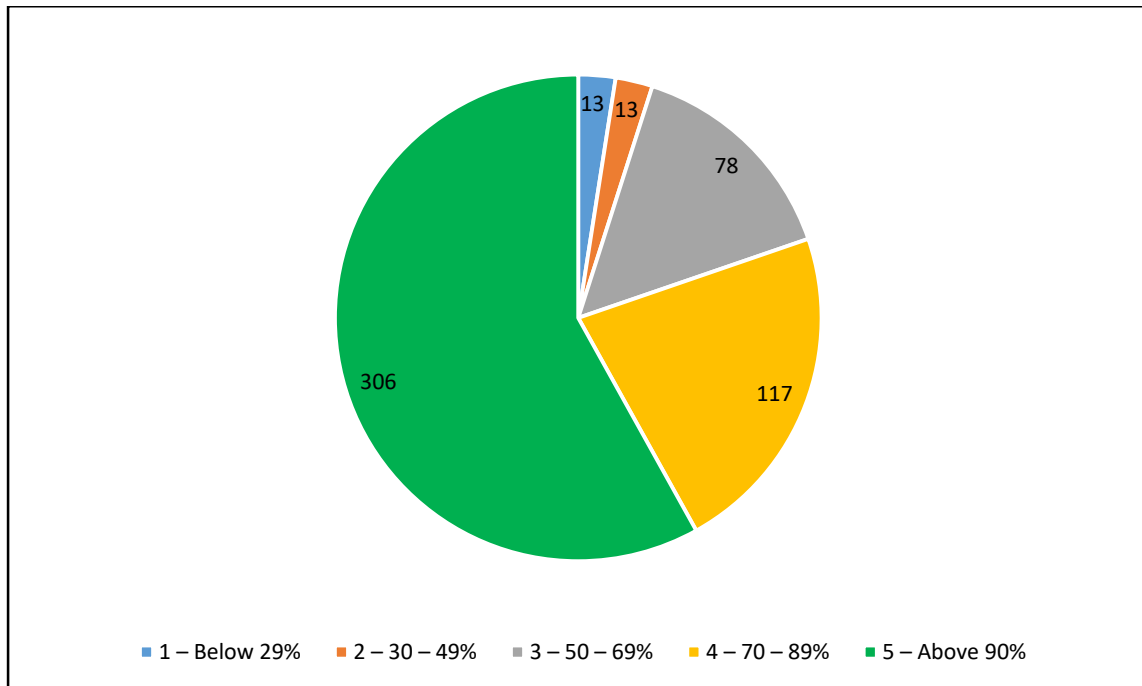
17) Teachers encourage you to participate in extracurricular activities. (527 Responses)



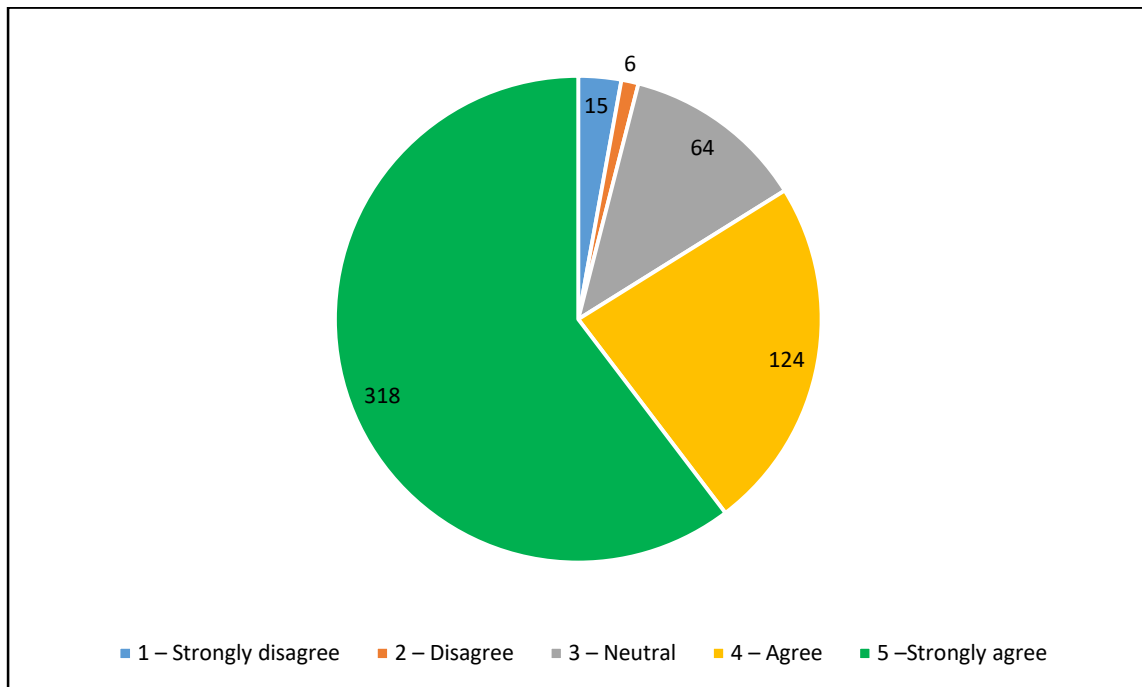
18) Efforts are made by the institute/ teachers to inculcate soft skills, life skills and employability skills to make you ready for the world of work. (527 Responses)



19) What percentage of teachers use ICT tools such as LCD projector, Multimedia, etc. while teaching. (527 Responses)



20) The overall quality of teaching-learning process in your institute is very good. (527 Responses)



IQAC Co-ordinator

Director